

PART OF THE SW.1/4, OF SECTION 33, T.7N., R.1W., S.L.B. & M.

268

MOUNTAIN CREEK CONDOMINIUMS

IN NORTH OGDEN CITY

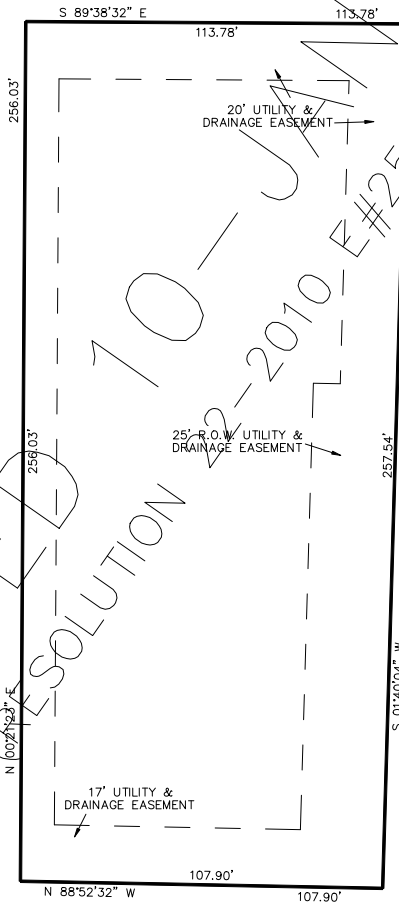
TAXING UNIT: 10

SCALE 1" = 30'

SEE PAGE 210

SEE PAGE 210

SEE PAGE 76-1



| UNIT | SERIAL# | OWNERSHIP |
|-------------|-----------|-------------------------------------|
| *1 | 172680001 | WILLIAM W MCKINNEY, JR |
| *2 | 172680002 | WILLIAM W MCKINNEY, JR |
| *3 | 172680003 | WILLIAM W MCKINNEY, JR |
| *4 | 172680004 | WILLIAM W MCKINNEY, JR |
| *5 | 172680005 | WILLIAM W MCKINNEY, JR |
| *6 | 172680006 | WILLIAM W MCKINNEY, JR |
| *7 | 172680007 | WILLIAM W MCKINNEY, JR |
| *8 | 172680008 | WILLIAM W MCKINNEY, JR |
| COMMON AREA | 172680009 | MT. CREEK CONDO. OWNERS ASSOCIATION |

*AMENDMENT TO DECLARATION
CHANGED THE NAME OF THE UNITS
E#1848636 BK2232 PG2026
16-MAY-2002

SEE PAGE 210

FOR COMPLETE ENG DATA SEE
ORIGINAL DEDICATION PLAT IN
BOOK 55, PAGE 72 OF RECORDS.